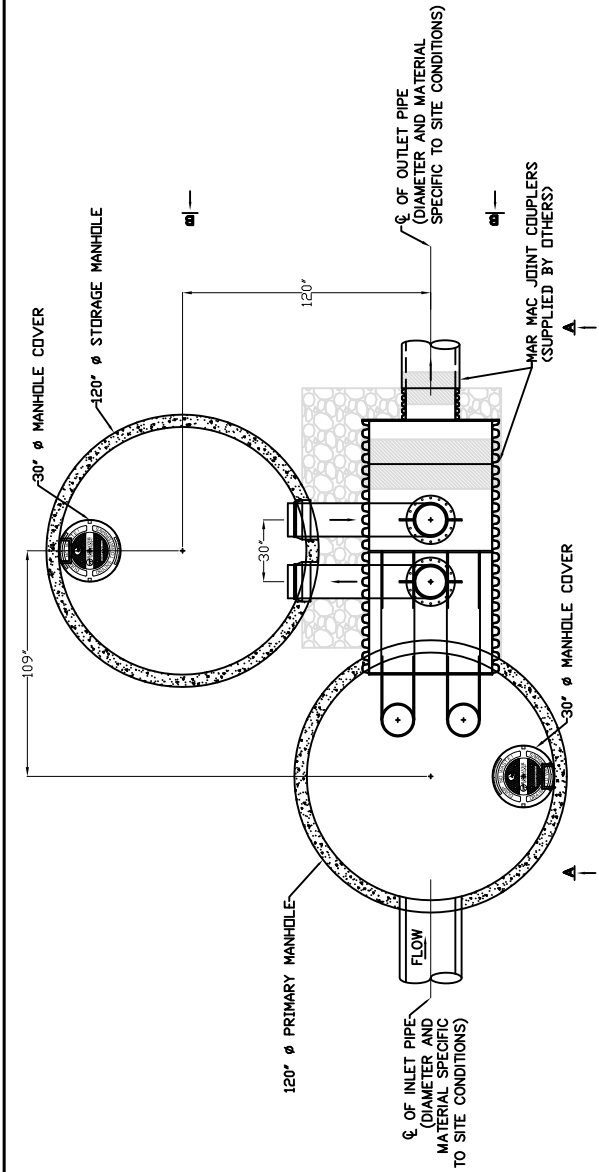


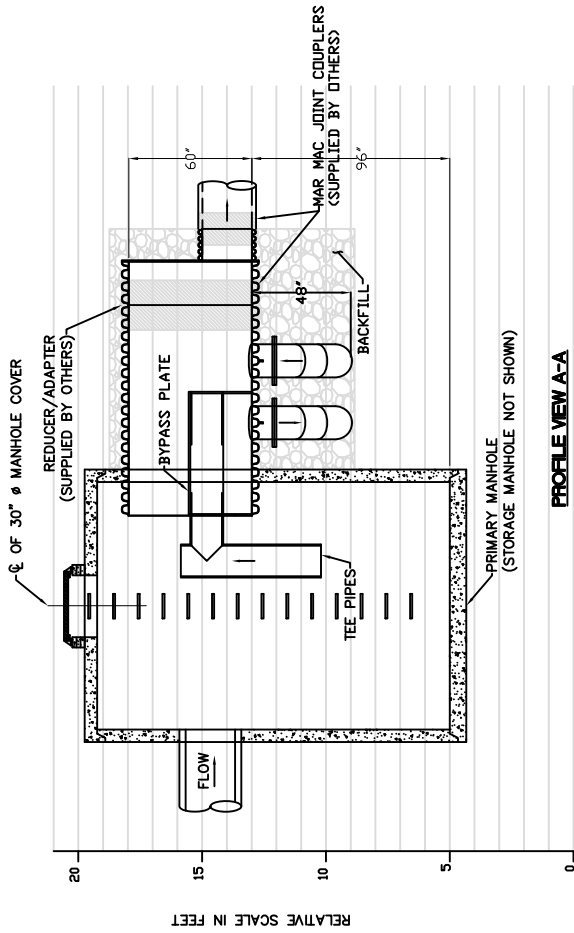
INLET PIPE INVERT:	XXXX
INLET PIPE ID AND MATERIAL:	XXXX
OUTLET PIPE INVERT:	XXXX
OUTLET PIPE ID AND MATERIAL:	XXXX
PRIMARY MANHOLE RIM ELEVATION:	XXXX
STORAGE MANHOLE RIM ELEVATION:	XXXX
ORIENTATION (RIGHT OR LEFT):	RIGHT

**GENERAL NOTES:**

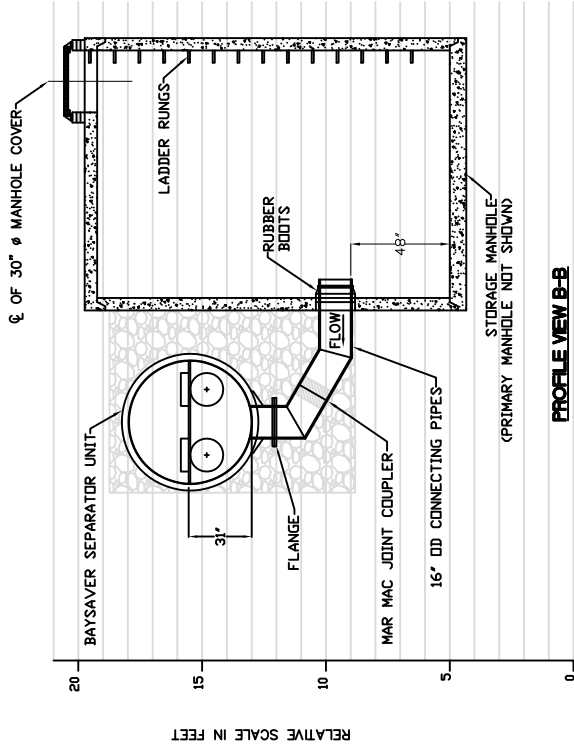
1. MANHOLES SHOWN REPRESENT STANDARD PRECAST STRUCTURES PROVIDED BY OTHERS.
2. SEAL THE CONNECTING PIPES INTO THE STORAGE MANHOLE USING RUBBER BOOTS/GASKETS.
3. THE BAYSAYER SEPARATION SYSTEM INCLUDES THE SEPARATOR UNIT, (2) CONNECTING PIPES AND (2) MAR MAC COUPLERS.
4. LEFT, HAND ORIENTATION SHOWN. FOR RIGHT HAND ORIENTATION ROTATE STORAGE MANHOLE AND CONNECTING PIPES 180°.
5. SEE BAYSAYER SPECIFICATIONS AND INSTALLATION INSTRUCTIONS FOR FURTHER DETAIL.
6. USE NON-SHRINK GROUT TO SEAL THE INLET PIPE AND BAYSAYER IN TO THE PRIMARY MANHOLE.
7. BACKFILL: CLASS I, II OR III BACKFILL SHOULD BE USED TO AN ELEVATION OF AT LEAST 6" OVER THE CROWN OF THE SEPARATOR UNIT.
8. 24" COVER REQUIRED FOR TRAFFIC RATED SURFACE.
9. BAYSAYER IS PROTECTED BY US PATENT NO. 5,746,911



**PLAN VIEW-BAYSAYER SEPARATION SYSTEM**  
(LEFT HAND ORIENTATION SHOWN)



**PROFILE VIEW A-A**



**PROFILE VIEW B-B**

REV	DESCRIPTION	DATE	APPR	NOTES:

**BAYSAYER TECHNOLOGIES, INC.**  
Engineering Stormwater Solutions  
www.BaySaver.com 800.229.7283

DESIGNED:	TEP	DATE:	11/05/08
DRAWN:	EKH	SCALE:	N.T.S.
CHECKED:	EKH	DWG NO.:	10K

10K BAYSAYER™  
GENERAL SYSTEM DETAILS